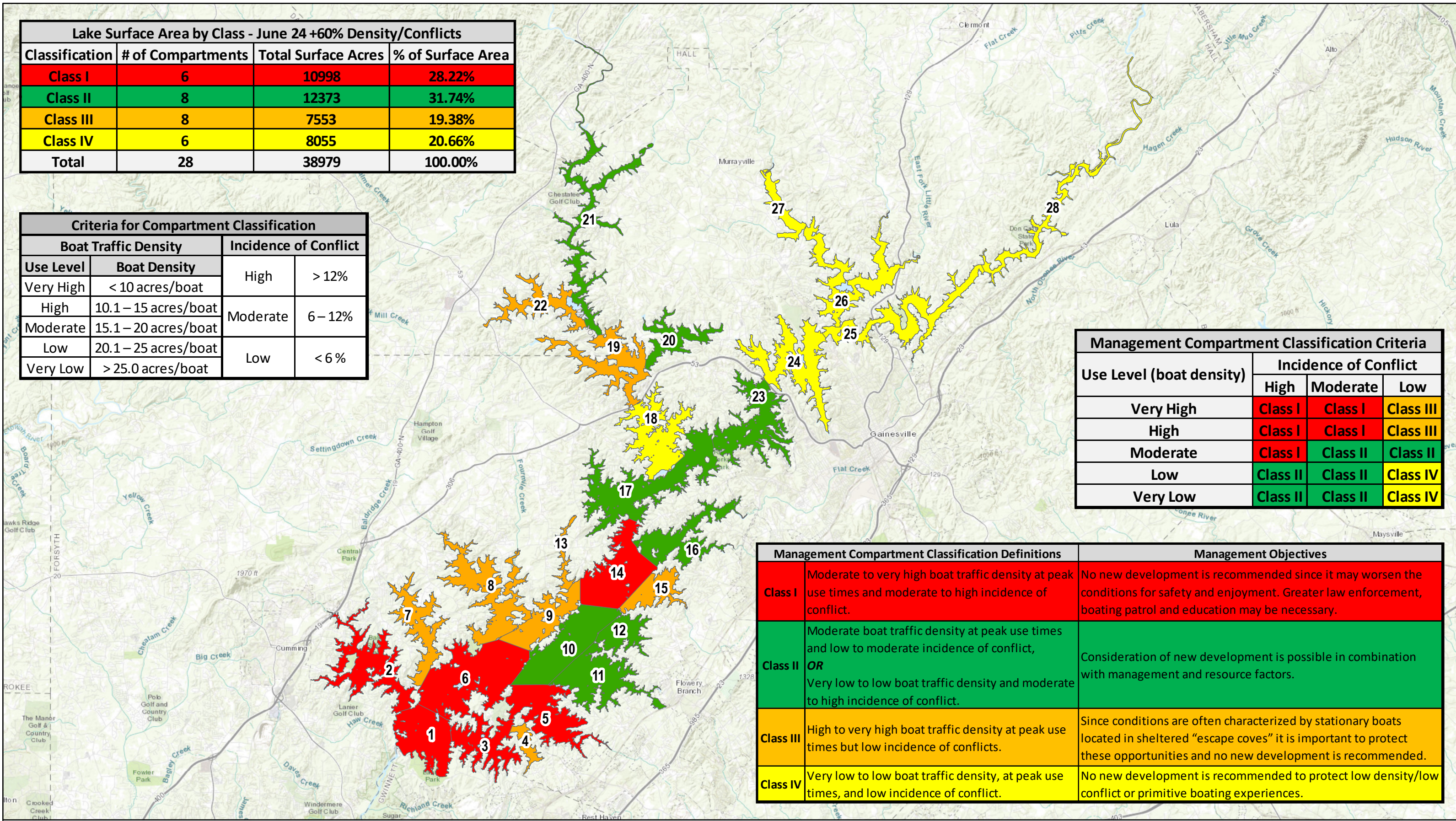


Lake Surface Area by Class - June 24 +60% Density/Conflicts			
Classification	# of Compartments	Total Surface Acres	% of Surface Area
Class I	6	10998	28.22%
Class II	8	12373	31.74%
Class III	8	7553	19.38%
Class IV	6	8055	20.66%
Total	28	38979	100.00%

Criteria for Compartment Classification			
Boat Traffic Density		Incidence of Conflict	
Use Level	Boat Density		
Very High	< 10 acres/boat	High	> 12%
High	10.1 – 15 acres/boat	Moderate	6 – 12%
Moderate	15.1 – 20 acres/boat		
Low	20.1 – 25 acres/boat	Low	< 6%
Very Low	> 25.0 acres/boat		

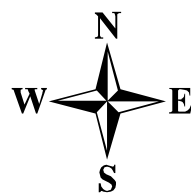
Management Compartment Classification Criteria			
Use Level (boat density)	Incidence of Conflict		
	High	Moderate	Low
Very High	Class I	Class I	Class III
High	Class I	Class I	Class III
Moderate	Class I	Class II	Class II
Low	Class II	Class II	Class IV
Very Low	Class II	Class II	Class IV

Management Compartment Classification Definitions		Management Objectives
Class I	Moderate to very high boat traffic density at peak use times and moderate to high incidence of conflict.	No new development is recommended since it may worsen the conditions for safety and enjoyment. Greater law enforcement, boating patrol and education may be necessary.
Class II	Moderate boat traffic density at peak use times and low to moderate incidence of conflict, <i>OR</i> Very low to low boat traffic density and moderate to high incidence of conflict.	Consideration of new development is possible in combination with management and resource factors.
Class III	High to very high boat traffic density at peak use times but low incidence of conflicts.	Since conditions are often characterized by stationary boats located in sheltered "escape coves" it is important to protect these opportunities and no new development is recommended.
Class IV	Very low to low boat traffic density, at peak use times, and low incidence of conflict.	No new development is recommended to protect low density/low conflict or primitive boating experiences.



Compartment Classification

 Class I	 Class III
 Class II	 Class IV



USACE
Lake Lanier Carrying Capacity
June 24 - 60% Increase in Density and Conflicts

